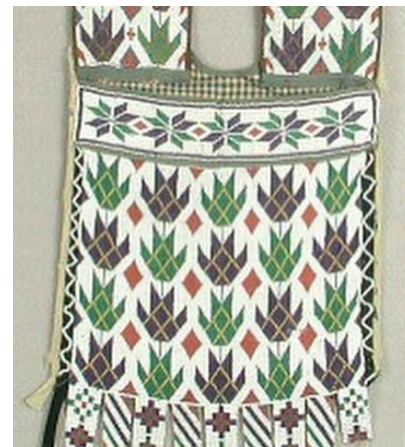


Evidence-Based Practices

What do you notice? What do you wonder? Where do you see the math in this image?

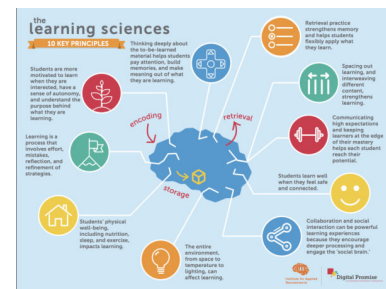
This image is courtesy of the Minnesota Historical Society and MIA. It was one of several pieces of Ojibwe loom beadwork that were the inspiration for [Sarah Agaton Howes' MN flag design](#). While her design was not chosen, the design itself and its story connects to evidence-based practices in mathematics.



Rachel Lambert led a session at NCTM regarding this, Unpacking the Evidence of Evidence-Based Practices in Mathematics. While I wasn't there, I was able to dig into her presentation and links which led me to [An Introduction to the Learning Sciences](#).

How is this related to the image above?

2. Thinking deeply about the to-be-learned material helps students pay attention, build memories, and make meaning out of what they are learning.



“When students are invited to think deeply about subject matter, they can better build strong memories. Deep thinking and a focus on making connections also allow students the time to make meaningful connections between the material, their own lives, and the world around them. **When students see how material relates to their lives and interests as well as other concepts they already know, they have frameworks for understanding the material more easily and can learn it more deeply.**”

This is a direct connection to A in the ICUCARE Framework, **Assess, Activate and build on prior knowledge**.

Strategies to support this:

- Asking questions
 - What do you notice? What do you wonder?
 - How is this connected to what we did yesterday, last week, to decimals?
- Formative assessment
 - [Retrieval Practice Strategies](#)
 - [Notes to My Future Forgetful Self](#) (Building Thinking Classrooms)
- Student self-assessment
- Rich tasks, low floor high ceiling



Dr. Lambert is offering this session through NCTM for members and nonmembers in January. The link to registration can be found [here](#).

A vertical graphic with a purple and blue gradient background and a snowflake pattern at the top. It features three circular headshots of speakers, each followed by the webinar title, date, time, and presenter name. The NCTM logo is in the bottom right corner.

January Webinar Series

 **Implementing the 5 Factors of Belonging**
January 17 | 7:00 PM ET
Presented by Crystal M. Watson

 **Belonging Beyond Day One: Fostering Community in Your Math Classroom**
January 25 | 7:00 PM ET
Presented by Lateefah Id-Deen

 **Unpacking Research Claims About the Teaching and Learning of Mathematics**
January 29 | 7:00 PM ET
Presented by Rachel Lambert

